

Coils dimensions:

	cold rolled coil		hot rolled coil	
	min	max	min	max
Outer diameter, mm	1 000	1 600	1 000	1 700
Width, mm	850	1 500	950	1 500
weight, tons	3,5	17	3,4	16,5

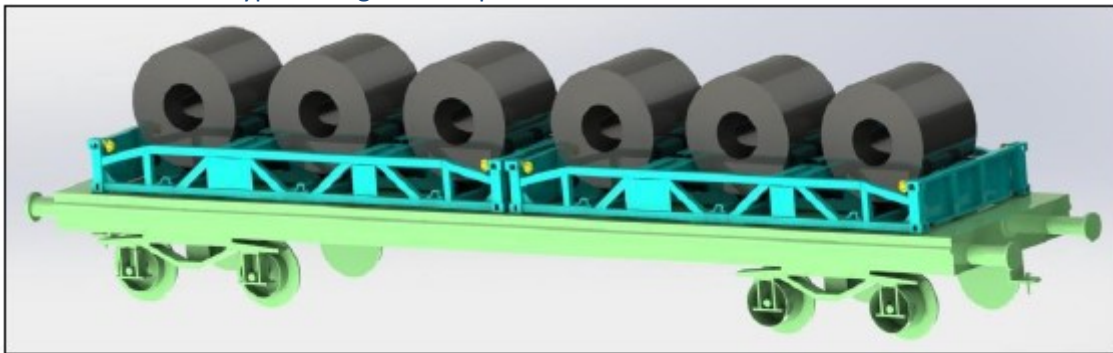
Part of the rolls from Ukraine will go EYE TO SIDE, other part EYE TO SKY.

Steel coils can be stored in an open warehouse in two layers EYE TO SIDE.

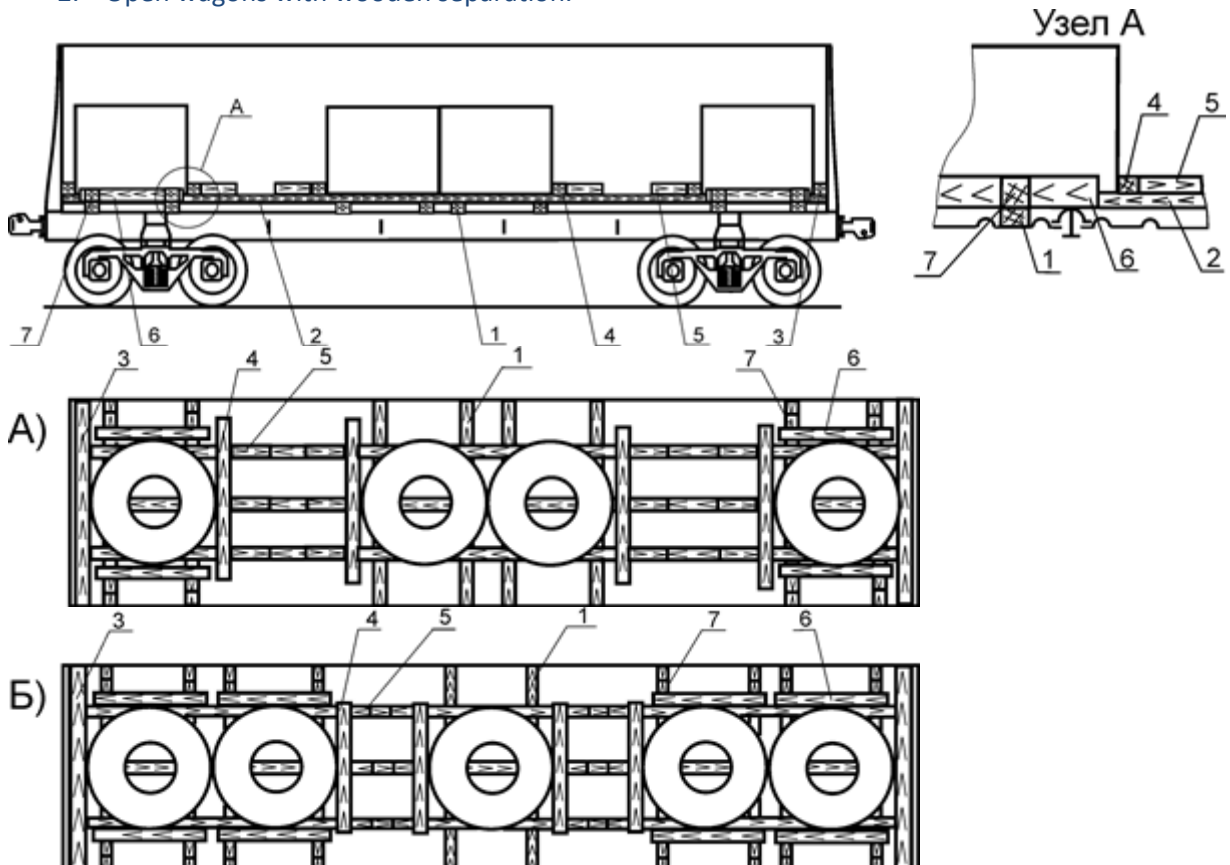
Steel coils are delivered to the border in Ea cars or specialized coil cars with RM-coils. The average weight of a steel coil is 12-13 tons.

Transportation of coils can be done in three options:

1. RM-coils is type of wagon as on pictures below.



2. Open wagons with wooden separation.



3. Loading in the Ea wagons using metal pallets (horizontal and vertical loading). Pallets to be sent back in Ea wagons by 10/18 pieces in each (depending on the type of pallet).



